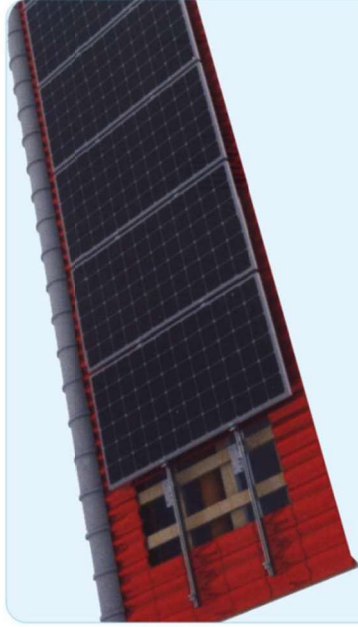


### JX009 Glazed tile roof bracket (Straight hook type)



This system consists of the following components:



### ADVANTAGES:

1. Good Appearance.
2. Easy and flexible Installation.
3. Diversified design
4. Light dead-weight.
5. Save installation materials

### DESCRIPTION:

- Installation place: Glazed tile roof
- Module slop: According to the practical demand
- Drawing force: 1000N
- Wind load: 40m/s, 32.5kg/m<sup>2</sup>, level 13
- Snow load: 70kg/m<sup>2</sup>
- Module type: Frame
- Material: Aluminum, stainless steel
- Colour: Natural
- Warranty time: 25 years.

### 1 First step

Remove the tile and fix the hook to the purlin with a self-tapping screw, as shown in Figure 1.



Figure 1 (a)



Figure 1 (b)

### 2 Second step

Secure the rail to the hook with a hexagon socket head bolt, as shown in Figure 2.



Figure 2

### 3 Third step

Fix the solar modules on the rail with middle clamps and side clamps, as shown in Figure 3

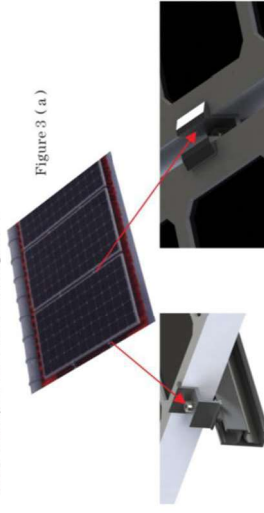


Figure 3 (a)

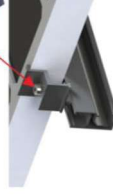


Figure 3 (b)

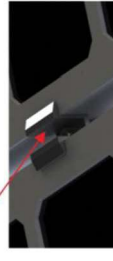


Figure 3 (c)

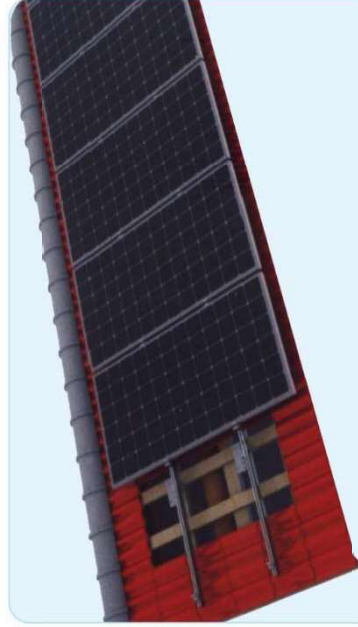
### Project example photo



### Project example photo



### JX010 Glazed tile roof bracket (Flat hook type)



This system consists of the following components:



- ADVANTAGES:**
1. Good Appearance.
  2. Easy and flexible Installation.
  3. Diversified design
  4. Light dead-weight.
  5. Save installation materials

**DESCRIPTION:**

- Installation place: Glazed tile roof
- Module Slop: According to the practical demand
- Drawing force: 1000N
- Wind load: 40m/s, 32.5kg/m<sup>2</sup>, level 13
- Snow load: 70kg/m<sup>2</sup>
- Module type: Frame
- Material: Aluminum, stainless steel
- Colour: Natural
- Warranty time: 25 years.

## 1 First step

Remove tiles, by tapping screws will hook is fixed on the steel purlin, as shown in figure 1:



Figure 1 (a)



Figure 1 (b)

## 2 Second step

The guide rail is fixed on the hook for inner six angle bolt, as shown in figure 2:



Figure 2

## 3 Third step

With IP block and edge block the solar component is fixed on the guide rail, as shown in figure 3:

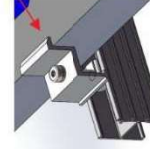


Figure 3 (a)

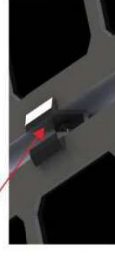


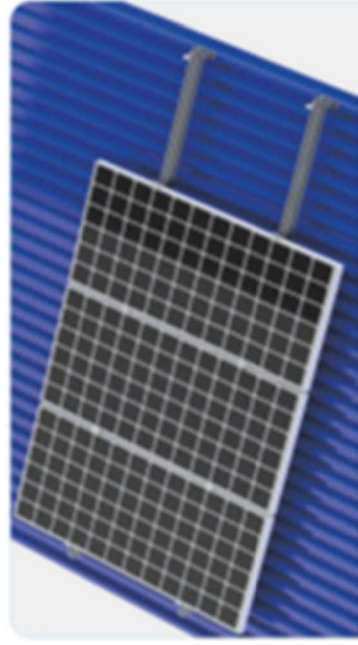
Figure 3 (b)

Figure 3 (c)

Project example photo



## JX004 Color steel tile roof L angle bracket



This system consists of the following components:



### DESCRIPTION:

- Installation place: Color-galvanized roof
- Module step: According to the practical demand
- Drawing force: 10000N
- Wind load: 40m/s, 32.5kg/m<sup>2</sup>, level 13
- Snow load: 70kg/m<sup>2</sup>
- Module type: Frame
- Material: Aluminum profile
- Colour: Natural
- Warranty time: 25 years.

- ### ADVANTAGES:
1. Good Appearance.
  2. Easy and flexible Installation.
  3. Diversified design
  4. Light dead-weight.
  5. Save installation materials

Project example photo



### 1 First step

Use the self-tapping screws to fix the L-angle bases on the color steel base (with waterproof pad), as shown below



Figure 1-1(a)



Figure 1-1(b)

### 2 Second step

Use the M12\*25 hexagon socket head bolt, flat washer, spring washer and slider nut on the guide rail to fix it on the L angle base, as shown below.

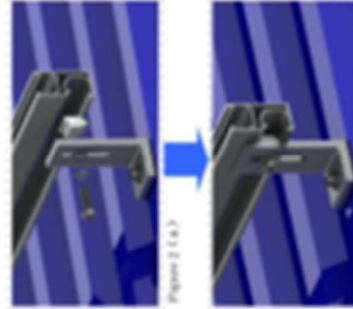


Figure 2-1(a)

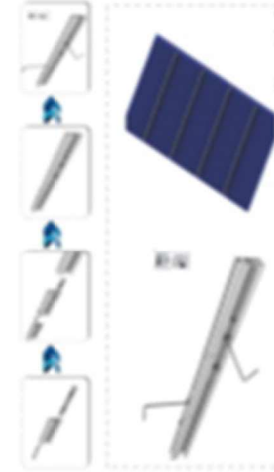


Figure 2-1(b)

Remark: When the array is rather long, the rail and the rail are fixed by the rail connecting piece, as shown above:

### 3 Third step

Fix the modules on the rail with side clamps and the middle clamps, as shown below.



Figure 3-1(a)

Side clamp fixed



Figure 3-1(b)

Middle-clamp fixed



Figure 3-2(a)



Figure 3-2(b)

## JX005 Color steel tile roof bracket (double screw)



This system consists of the following components:



### DESCRIPTION:

- Installation place: Caigang watts roof
- Module slop: According to the practical demand
- Drawing force: 1000N
- Wind load: 40m/s、32.5kg/m<sup>2</sup>、level 13
- Snow load: 70kg/m<sup>2</sup>
- Module type: Frame
- Material: Aluminum, stainless steel
- Colour: Natural
- Warranty time: 25 years.

### ADVANTAGES:

1. Good Appearance.
2. Easy and flexible Installation.
3. Diversified design
4. Light dead-weight.
5. Save installation materials

### Project example photo



## 1

### First step

Fix the L-angle connector on the color steel tile with a double-tooth screw, as shown in Figure 1



Figure 1

## 2

### Second step

Secure the rail to the L-angle connector with a hexagon socket head bolt, as shown in Figure 2



Figure 2

## 3

### Third step

Fix the solar module on the rail with middle clamps and side clamps, as shown in Figure 3.



Figure 3 ( a )

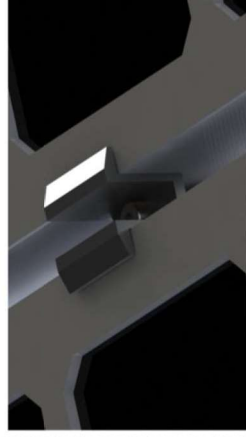


Figure 3 ( b )

## 4

### Fourth step

The installation is finished .

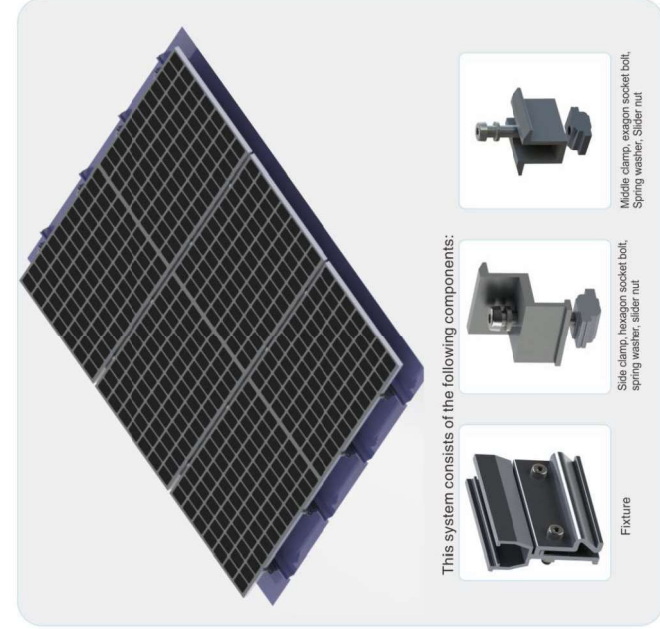


Project example photo



Project example photo

## JX001 Color steel tile roof bracket (integral fixture point mount)



This system consists of the following components:



- ADVANTAGES:**
1. Good Appearance.
  2. Easy and flexible Installation.
  3. Diversified design
  4. Light dead-weight.
  5. Save installation materials

Project example photo



### 1 First step

Fix the clamp on the color steel tile with the M8\*35 hex socket bolt, as shown below:



Figure 1 (a)



Figure 1 (b)

### 2 Second step

Fix the modules on the fixture with the M8 hexagon socket head bolt, side clamp block, middle clamp, spring washer and slider nut, as shown below.



Figure 2 (a)



Figure 2 (b)



Figure 2 (c)

Project example photo



# JX-FSZJ

## [Waterproof pv bracket installation instructions]

This Bracket System Contains The Following Accessories:

Waterproof Rail	U-Shaped Aqueduct	Rail Connection	Waterproof Strip
Rail Positioner	Side Clamp Combination	Mid Clamp Combination	Waterproof Cover

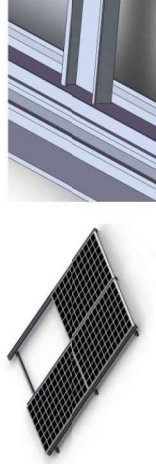
**Patent Application No. 202020287821.X**

### Waterproof Bracket Installation Steps:

1. Fix the waterproof rail on the original purlin with T bolt of M8 \* 25. As shown below:



Installation node diagram (taking C-shaped steel purlins as an example)



Photovoltaic module installation node diagram:



Installation drawing of mid clamp

Installation drawing of side clamp

3. Finally, install the waterproof cover. It can be clamped directly with the middle pressure through the middle gap. As shown below:

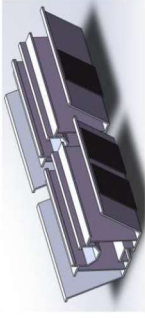


**NOTE**  
If the w waterproof rail needs to be spliced and lengthened, then the installation method is as follows:

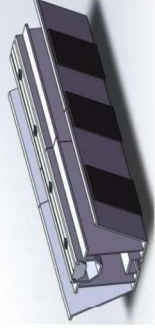


### ※ Installation method of waterproof rail connection:

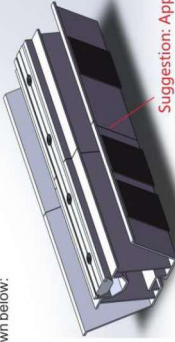
1. Insert the waterproof strips into the joints of the waterproof rails, two strips at a time. (Tips: coated with detergent before inserting the waterproof strips: easy to slide in), as shown below



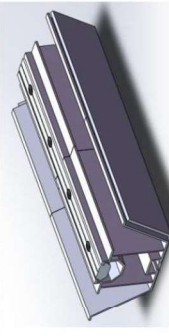
3. Adjust the waterproof strip to the proper position, the middle one is in the middle of the two rail interface: as shown below



2. Then use the rail positioner to fix the two rail interfaces: as shown below:



4. Fix the two guide rails with four M8 \* 25 T-bolts and guide rail connectors: as shown below



Suggestion: Apply glass glue first and then move the waterproof rubber strip to the splice

### Waterproof Bracket Accessories
